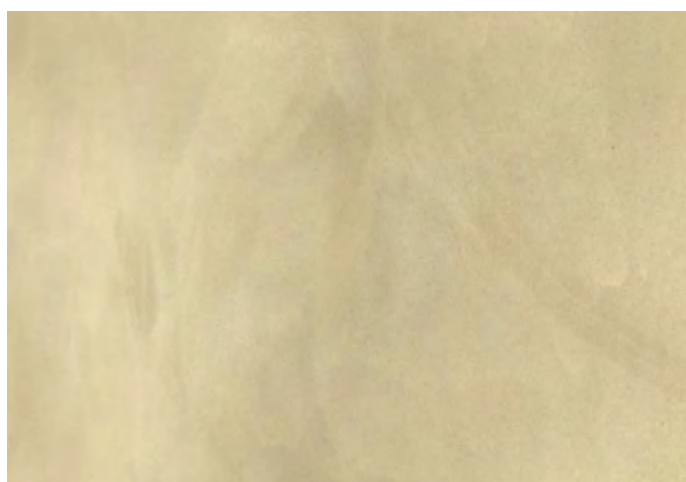


DURACEM CONCRETE DESIGN FLOORS



COMPOSITION

Duracem is a biopolymer based flooring up to 50% recycled material being used. The Duracem has a monolithic concrete look by using recycled material. Duracem has a Declare Red List Free label.



CURE TROUGH

Duracem is walkable 24 hours after the installation. The complete chemical and mechanical properties will be achieved after 7 days of curing at a minimum temperature of 15°C.

MAINTENANCE

Regular removal of dust and if necessary wet cleaning with a neutral cleaning agent. For further instructions see the maintenance instruction guide.

INSTALLATION

The concrete or screed subfloor has to be primed and levelled with a self levelling smoothing compound to obtain a flat and levelled surface. Uneven surfaces have to be leveled by e.g. diamond grinding prior to the levelling compound.

All dust and loose parts have to be fully removed from all surfaces before the product is applied, preferably using a brush and/or industrial vacuum cleaner. Prior to the installation of the Duracem a suitable primer needs to be applied. During the installation the room temperature needs to be at least 62 °F (15,5°C). The floor temperature need to be at least 59 °F (15°C) and minimum 3 °F (3 °C) above the dew point.

APPLICATION

Duracem is a tough, flexible seamless comfortable floor covering. Duracem can be used as a seamless decorative floor covering in the education sector, medical sector, offices, museums, but is also suitable for domestic surfaces. In short Duracem is a perfect solution for floors where the owners and users have a high demand on comfort, wear and impact resistance and hygiene. Duracem is a seamless solution from wall to wall. It's a great alternative to hard concrete look finishes.

APPEARANCE

Duracem has an unique look which is being determined by the recycled material inside. The Duracem has 12 different concrete looks. It is finished with a matt look. Duracem is tough-elastic and shows a perfect resistance to the signs of use. After cure through Duracem is resistant to a wide range of chemicals, acids, leys, resins, solvents and foodstuff. Duracem is seamless and liquid tight. The majority of the ingredients in Duracem are renewable resources. Duracem is free of plasticizers. Duracem is easy maintainable.

LAYER THICKNESS

2 to 2,5mm.

CLASSIFICATION

CLASS 23 DOMESTIC HEAVY
Minimum thickness 2 mm

CLASS 34 COMMERCIAL VERY HEAVY
Minimum thickness 2 mm

CLASS 43 INDUSTRIAL HEAVY
Minimum thickness 2 mm

TECHNICAL DATA

RESISTANCE TO INDENTATION
EN ISO 24343-1 • 0.03 mm • ASTM F-1914 • 0.001inch / 750 PSI

EFFECT OF A FURNITURE LEG
EN 424 • No damage • Static Load Limit: exceeds 1000 PSI when tested in accordance ASTM F-970-00

ABRASION RESISTANCE
ASTM D4060 -14 • CS17 • Wheels/10N/1500 cycles • 55 mg

ELECTRICAL BEHAVIOR
EN 1815 • < 2 kV

LIGHTFASTNESS
EN ISO 105-B02 • 7 - 8 • ASTM F-1515 • 7 - 8 (1-Severe change, 8-No change)

FLEXIBILITY
EN 435 • 20 mm, no cracking • ASTM F-137-08 • 0.79 inch, no cracking

RESISTANCE TO CHEMICALS
EN ISO 26987 • No changes • Passes in accordance with ASTM F-925 • No change

STAINING RESISTANCE
EN 423 • Category 1+2: level 5, Category 3: level 4/5

CIGARETTE RESISTANCE
EN 1399 • Proc A (stubbed out) ≥ level 4 • Proc B (burning) ≥ level 3

THERMAL CONDUCTIVITY
EN ISO 12524 • 0.15 W/m.K, suitable for underfloor heating • ASTM C-518-17 • 0.15 W/m.K

ACCOUSTICAL IMPACT NOISE REDUCTION
EN ISO 12524 • ASTM E-2179 03 • Δ Lw = 8dB Corques • 15dB Corques Comfort

THICKNESS SWELLING
EN 13329 • < 0,8%

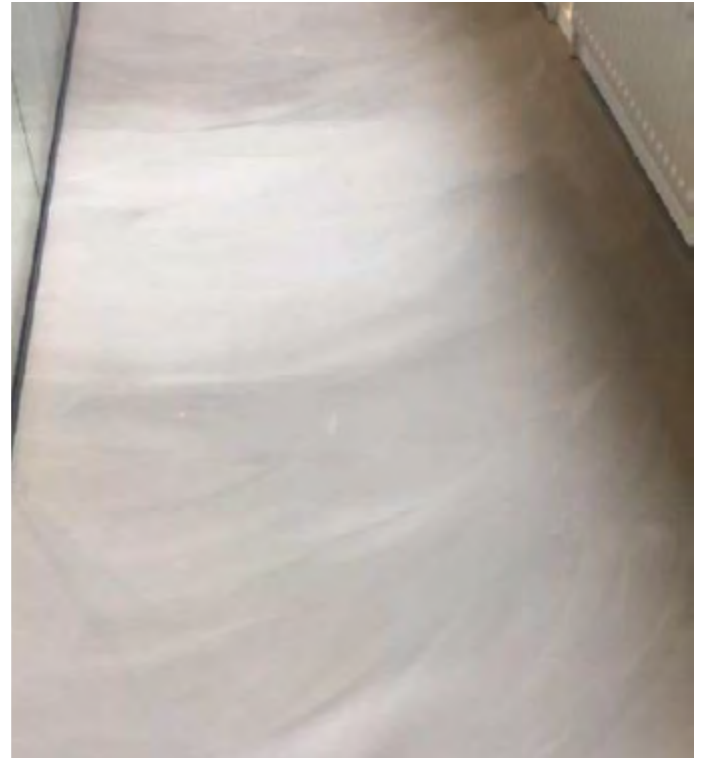
WATER TIGHTNESS
EN 13563 • Watertight

SUITABILITY FOR USE IN INCIDENTAL HUMID CONDITIONS
EN 426 • Suitable

CE NUMBER
15 • DoP08COR017 • EN 13813:2002

DURACEM CONCRETE DESIGN FLOORS
Contains recycled content

REACTION TO FIRE EN 13501-1 • Bfl-S1 • Class 1 when tested in accordance with ASTM E-648 Critical Radiant Flux
• Meets 450 or less, when tested in accordance with ASTM 662/ NFPA 258 Smoke Density



CASTOR CHAIR CONTINUOUS USE EN 425 • 25.000 • Slight change in appearance • no delamination • ASTM D-6962 • 25.000 • slight change • no delamination

SLIP RESISTANCE DIN 51130 • R9 standard / R11 upon request • EN 13893 • DS: ≥ 0,30 • Meets or exceeds the industry recommendation of >0.5 for flat surfaces when tested in accordance with ASTM D-2047

* However the ASTM F-2034 and teh ASTM F-2195 are designed for sheeted or tiled linoleum Duracem Concrete Design Floors fulfill or exceeds all technical requirements mentioned in these ASTM normatives.



WANT TO
KNOW MORE
ABOUT THE
PRODUCT?
CLICK HERE!

